



**ALASKA DIVISION OF HOMELAND SECURITY &
EMERGENCY MANAGEMENT**

SITUATION REPORT 23-289 • October 16, 2023



Toll-Free 1.800.478.2337

Anchorage Area 907.428.7000

SEOC 907.428.7100

<p><u>SEOC Preparedness Level</u></p> <p>Level 1 - Routine Operations</p>	<p>http://ready.alaska.gov</p>	<p><u>National Terrorism Advisory System:</u></p> <p>Read the NTAS Bulletin here</p>
<p><u>Maritime Security (MARSEC)</u> Level:1- Minimum Appropriate Security Measures</p>	<p>WHO Novel Coronavirus Pandemic (COVID-19):</p> <p>2019 Novel Coronavirus</p>	<p><u>Alaska Military Installation Force Protection Level:</u> FPCON Bravo</p>

(Significant changes from previous situation reports are red.)

Significant Issues:

Widespread heavy rain and strong winds to impact panhandle Tuesday to Thursday from Ex Typhoon Bolaven.

State of Alaska Department of Health (DOH)

The DOH stands ready to assist with all aspects of public health and in the event of a public health emergency, supported by the SEOC and other state departments as required. For current information, see:

<https://health.alaska.gov/dph/Pages/default.aspx>

<https://health.alaska.gov/dph/Emergency/Pages/prepared/default.aspx>

NTAS Bulletin

The U.S. Department of Homeland Security has issued an updated National Terrorism Advisory Bulletin. The updated bulletin can be viewed at the below link.

To read current or expired advisories, click the link below:

<https://www.dhs.gov/national-terrorism-advisory-system>

Travel Alerts and Conditions

For current driving conditions dial 511 or link to <https://511.alaska.gov/>

Barry Arm Landslide / Tsunami Risk

For the latest information on the Barry Arm Landslide and Tsunami risk, click here:

<https://dggs.alaska.gov/hazards/barry-arm-landslide.html>

Recent Earthquakes

An earthquake with a preliminary magnitude of 6.4 occurred in the Andreanof Islands region of Alaska at 1136 UTC on Monday October 16, 2023. No reports of these event being felt have been received at this time and there is no tsunami threat from this earthquake.

USGS Earthquake Information: <http://earthquake.usgs.gov/>
National Tsunami Warning Center: <http://tsunami.gov/>

Alaska Volcanoes

Clear web camera views of Shishaldin from yesterday and today show a robust vapor cloud at the volcano's summit. The vapor cloud does not indicate that an eruption is in progress and probably reflects the interaction of hot material and snow and ice. The Aviation Color Code remains at ORANGE and the Volcano Alert Level at WATCH.

Great Sitkin Alert Level: **Watch** and Aviation Color Code: **Orange**
Shishaldin Alert Level: **Watch** and Aviation Color Code: **Orange**
Trident Alert Level: **Advisory** and Aviation Color Code: **Yellow**

For Alaska Volcano updates, go to: <https://www.avo.alaska.edu/>

Air Quality Index (AQI) Advisories

For the most up to date Air Quality Index Advisories:
<http://dec.alaska.gov/Applications/Air/airtoolsweb/Home/Index>

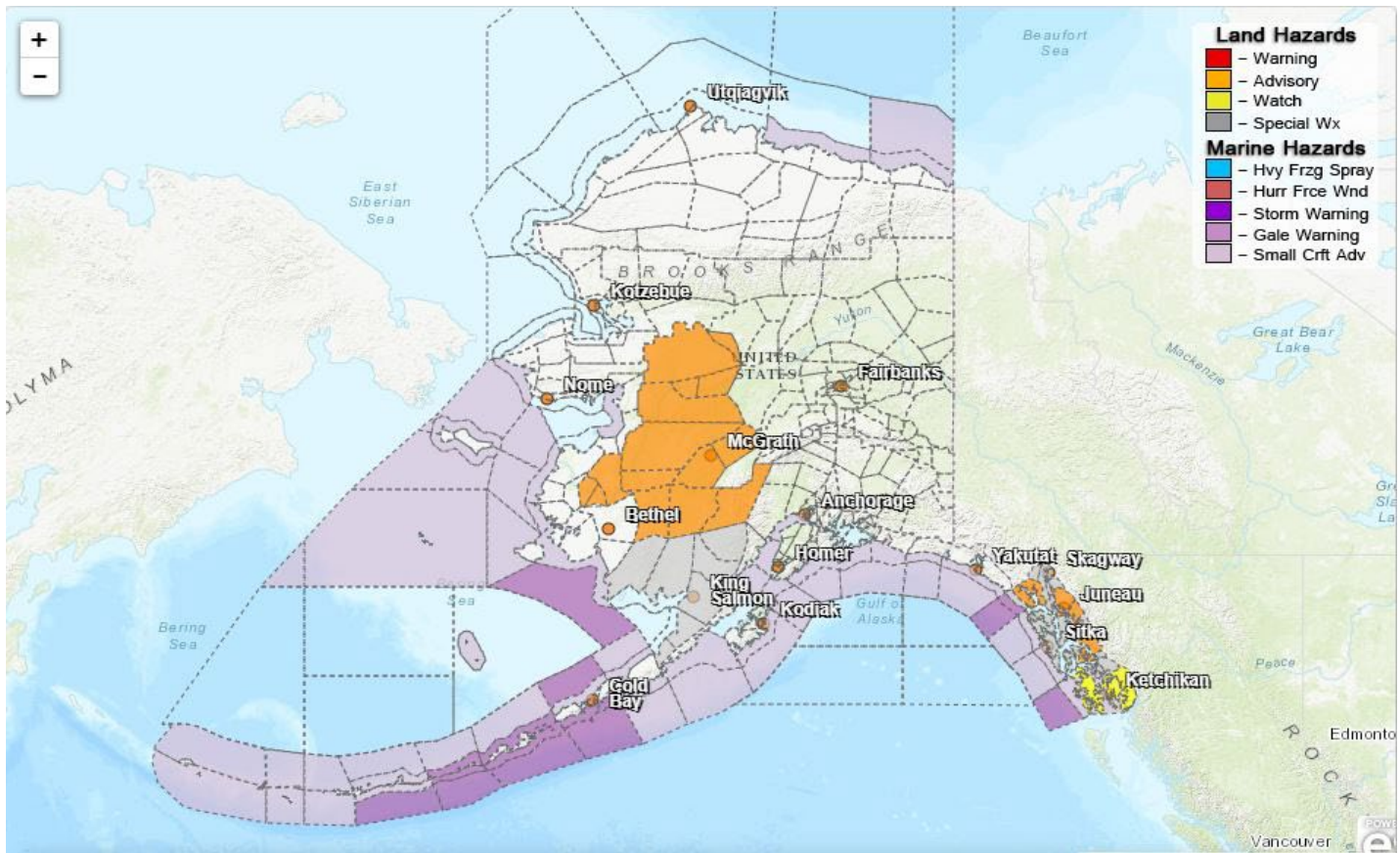
Spills of Oil and Hazardous Substances

The ADEC Spill Prevention and Response page is located at:
[http://dec.alaska.gov/spar/ppr/spill information/response/](http://dec.alaska.gov/spar/ppr/spill%20information/response/)

Alaska Cyber Security Information

State Employees may sign up for cyber security notifications and alerts at
<https://oit.alaska.gov/security>
CISA-Cybersecurity Services and Tools: www.cisa.gov/free-cybersecurity-services-and-tools

Significant Weather:



Special Weather Statements:

- Bristol Bay North of Koliganek: Below-freezing surface temperatures in combination with warm air moving overhead could lead to freezing rain with minor ice accumulations.

Hydrologic Outlook:

- Municipality of Skagway; Haines Borough and Klukwan; Glacier Bay; Eastern Chichagof Island; Cape Fairweather to Lisianski Strait; City and Borough of Sitka; Admiralty Island; City and Borough of Juneau; Petersburg Borough; Western Kupreanof and Kuiu Island; Prince of Wales Island; City and Borough of Wrangell; Ketchikan Gateway Borough; Annette Island:

Ex Typhoon Bolaven will move into the Gulf of Alaska Tuesday morning, bringing widespread heavy rain with strong to high winds Tuesday afternoon through Thursday combined with saturated soils will also bring concerns for tree falls, mainly along riverbanks at this time. Main threats to the region include a rise in rivers, streams, and creeks beginning Tuesday night into Friday morning as the long duration rainfall event moves over Southeast Alaska.

Watches:

- High Wind Watch in effect from Tuesday morning through late Tuesday night for Prince of Wales Island,; Ketchikan Gateway Borough and Annette Island.

Advisories:

- Winter Weather advisories are in effect for Lower Yukon River, Lower Yukon and Innoko Valleys; Upper Kuskokwim Vally; Lower Koyukuk Valley; Middle Yukon Valley until 6:00 am tomorrow morning and for the Lower Kuskokwim Valley until 2:00 pm this afternoon.

For more information and the most current weather, go to: <http://www.weather.gov/arh>.

The Next Situation Report will be **October 17, 2023**. A significant change in the situation or the threat level will prompt an interim report. This report is posted on the internet at <https://ready.alaska.gov/sitrep>. To register for email distribution, go to <http://list.state.ak.us/mailman/listinfo/dhsem.situation.report>. Direct questions regarding this report to the SEOC at 907-428-7100 or seoc@alaska.gov